

# Diurnal and Nocturnal Animals

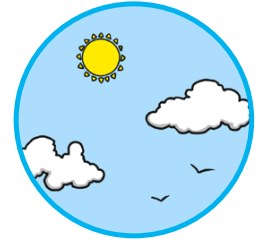
## Diurnal Animals

Diurnal animals are active during the \_\_\_\_\_.

They hunt, eat and \_\_\_\_\_ when it is light.

They need light to help them to \_\_\_\_\_.

When it is dark, diurnal animals \_\_\_\_\_. Butterflies, squirrels and \_\_\_\_\_ are all diurnal.



## Nocturnal Animals

\_\_\_\_\_ animals are active at night. They hunt, eat and move when it is \_\_\_\_\_.

Nocturnal \_\_\_\_\_ sleep when it is light. Some nocturnal animals live in hot places. They sleep during the day to avoid the

\_\_\_\_\_ of the sun. Others come out at night to avoid being

\_\_\_\_\_ by predators. But some \_\_\_\_\_ hunt at night, when fewer animals are awake and searching for food.

Foxes, hedgehogs and \_\_\_\_\_ are all nocturnal.



## Amazing Adaptations

Staying \_\_\_\_\_ in the dark is tricky. Nocturnal animals often have special features to help them \_\_\_\_\_ at night.



1. Big \_\_\_\_\_ that can see in the dark.
2. Big cupped ears with excellent \_\_\_\_\_.
3. Echolocation to help them work out \_\_\_\_\_ things are.
4. A super sense of smell to track down \_\_\_\_\_.

# Diurnal and Nocturnal Animals - Answers

Accept any alternative answers that make sense.

## Diurnal Animals

Diurnal animals are active during the day. They hunt, eat and move when it is light. They need light to help them to see. When it is dark, diurnal animals sleep. Butterflies, squirrels and humans are all diurnal.

## Nocturnal Animals

Nocturnal animals are active at night. They hunt, eat and move when it is dark. Nocturnal animals sleep when it is light. Some nocturnal animals live in hot places. They sleep during the day to avoid the heat of the sun. Others come out at night to avoid being eaten by predators. But some predators hunt at night, when fewer animals are awake and searching for food. Foxes, hedgehogs and bats are all nocturnal.

## Amazing Adaptations

Staying alive in the dark is tricky. Nocturnal animals often have special features to help them survive at night.

1. Big eyes that can see in the dark.
2. Big cupped ears with excellent hearing.
3. Echolocation to help them work out where things are.
4. A super sense of smell to track down food.